

YOUR Crafts



Templates

MARCH 2014

FIND THE TEMPLATE YOU REQUIRE ON THE CONTENTS LIST
BELOW AND JUST PRINT OUT THE PAGE OR PAGES YOU
NEED FROM YOUR PRINT MENU

Page 2 MAKE & SELL

Use our copy-right free template to make and sell
stitched mice

Magazine page 30

Page 2 PATCHWORK IDEAS

Create a pretty purse and hexagon flower

Magazine page 93

Page 3 CUDDLY BUNNY

Knit a dress for your bunny with our chart

Magazine page 93

Page 3 CROSS-STITCH

Cross-stitch lettering and a cotton reel

Magazine page 4

Page 3 BOOK COVERS

Protect your books by stitching them covers

Magazine page 97

Pages 4/5 FOX BOX & CARD

Use our templates to make a fox card and gift bag

Magazine page 18

Page 6 GINGERBREAD TEMPLATE

Make a gingerbread-shaped card or papercraft project

Magazine page 77

Page 7-14 OWL PATTERN

Stitch a family of feathered friends

Magazine page 90

Page 15 RESIN JEWELLERY IMAGES

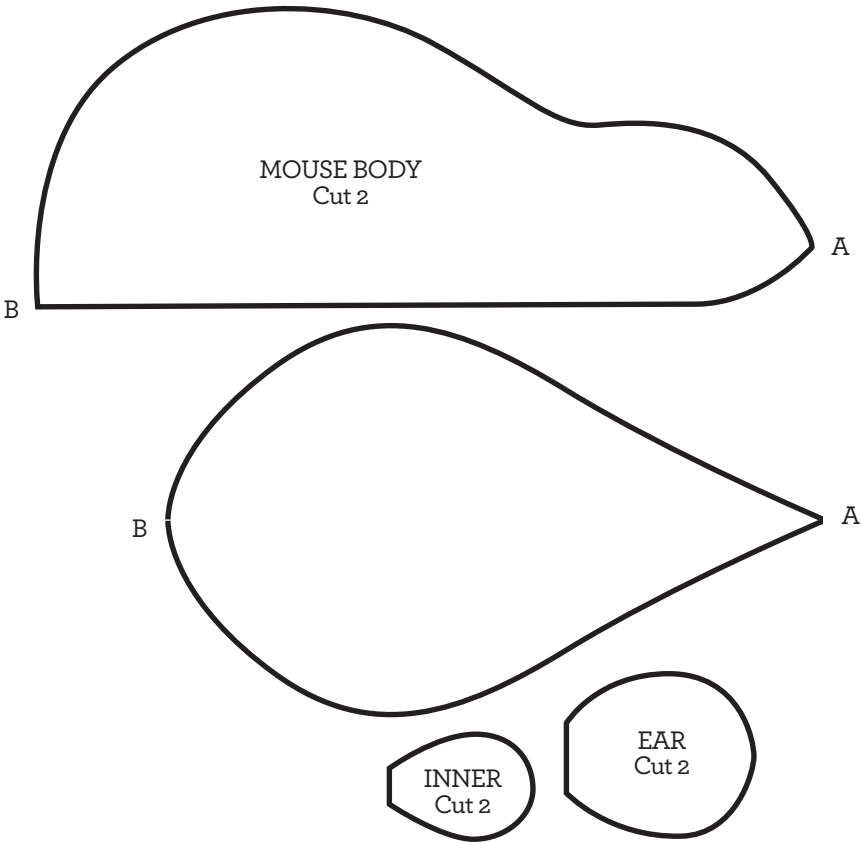
Make gorgeous pieces with our botanical imagery

Magazine page 105

MAKE & SELL

Use our copy-right free template
to make and sell stitched mice

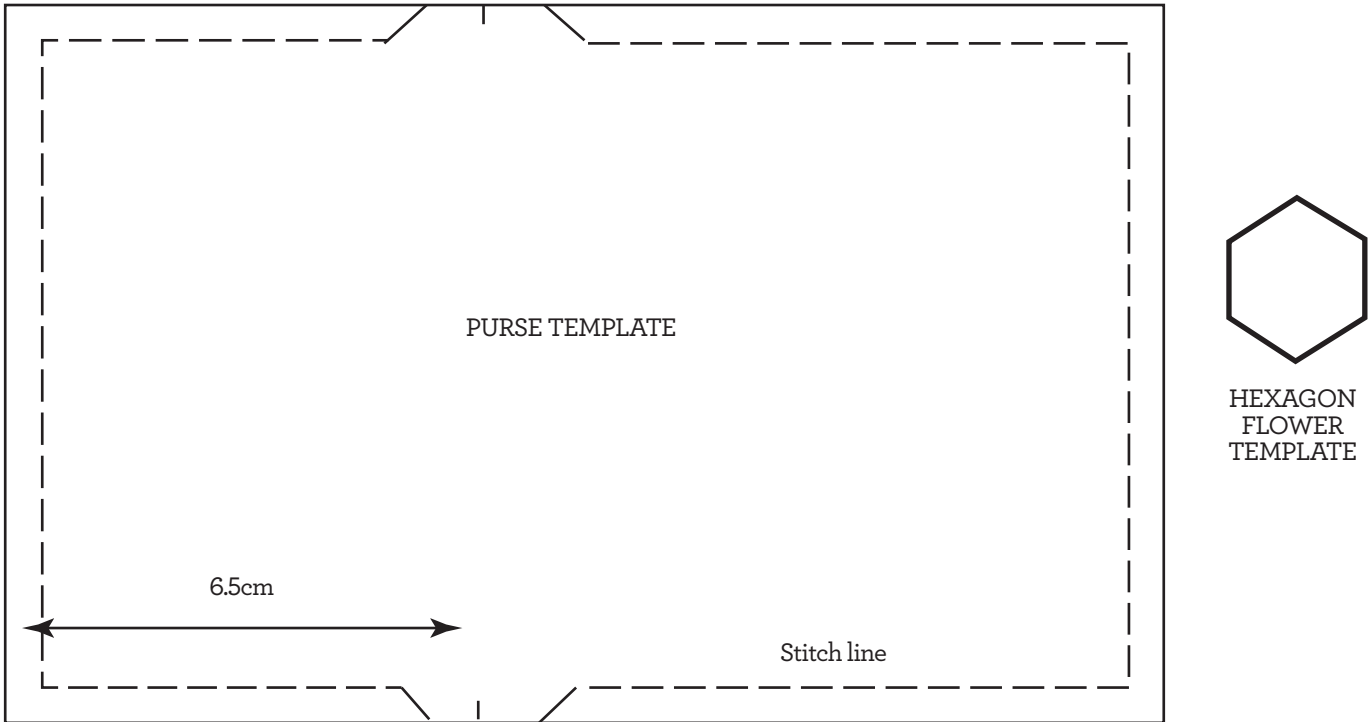
Page 30 in magazine



PATCHWORK IDEAS

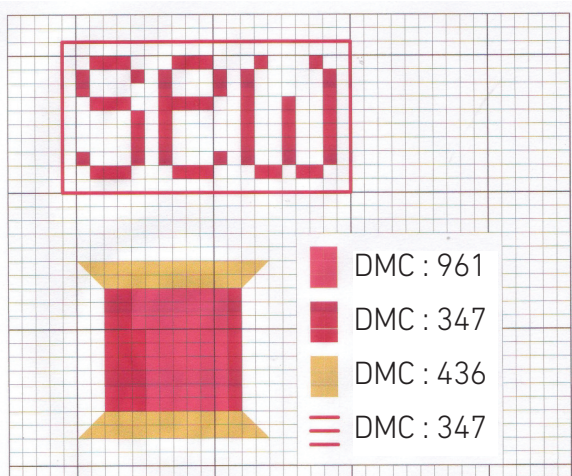
Create a pretty purse and hexagon flower

Page 93 in magazine



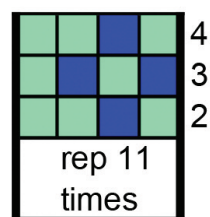
Cross-stitch lettering and a cotton reel

Page 47 in magazine



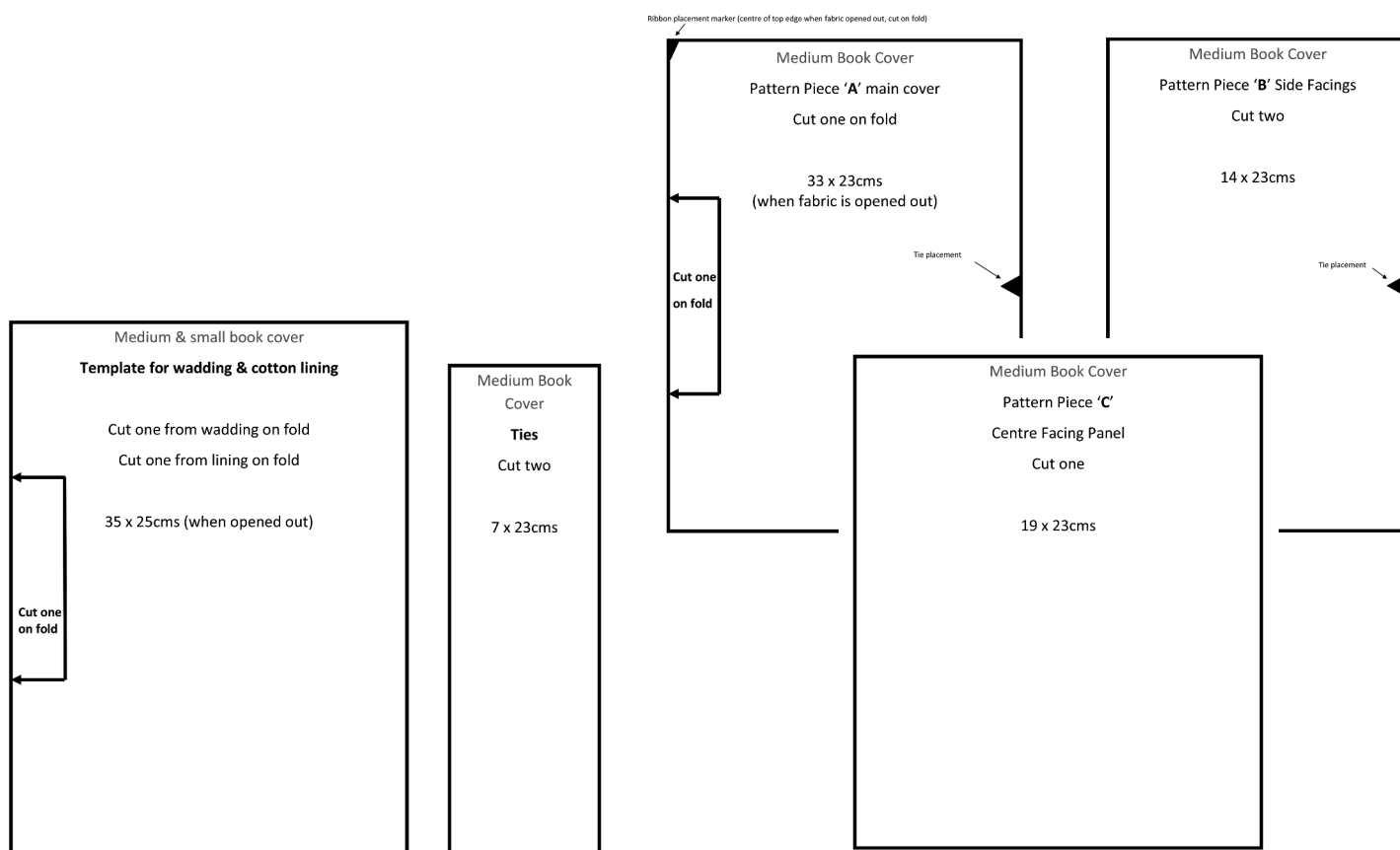
Knit a dress for your bunny with our chart

Page 47 in magazine



Protect your books by stitching them covers

Page 97 in magazine

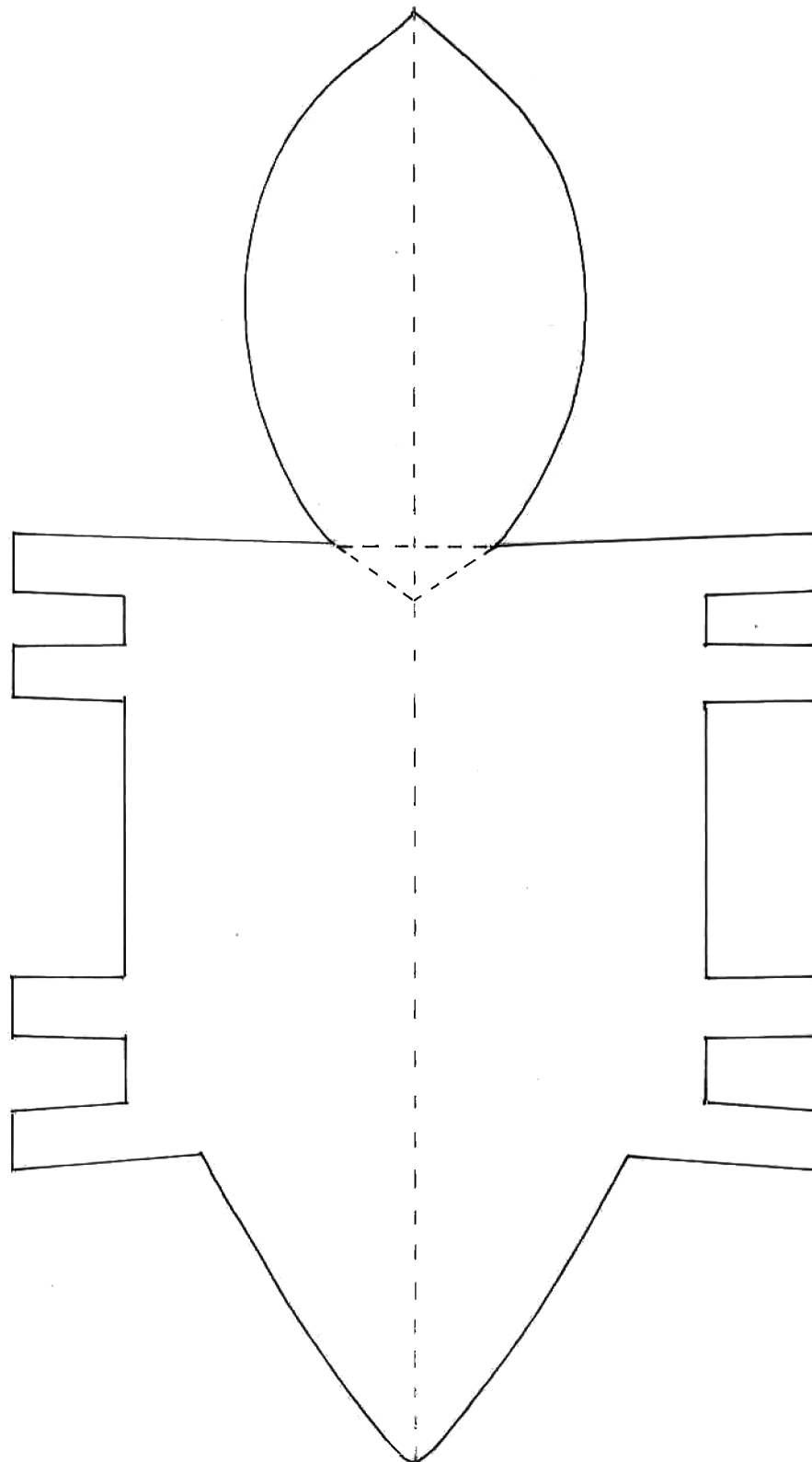


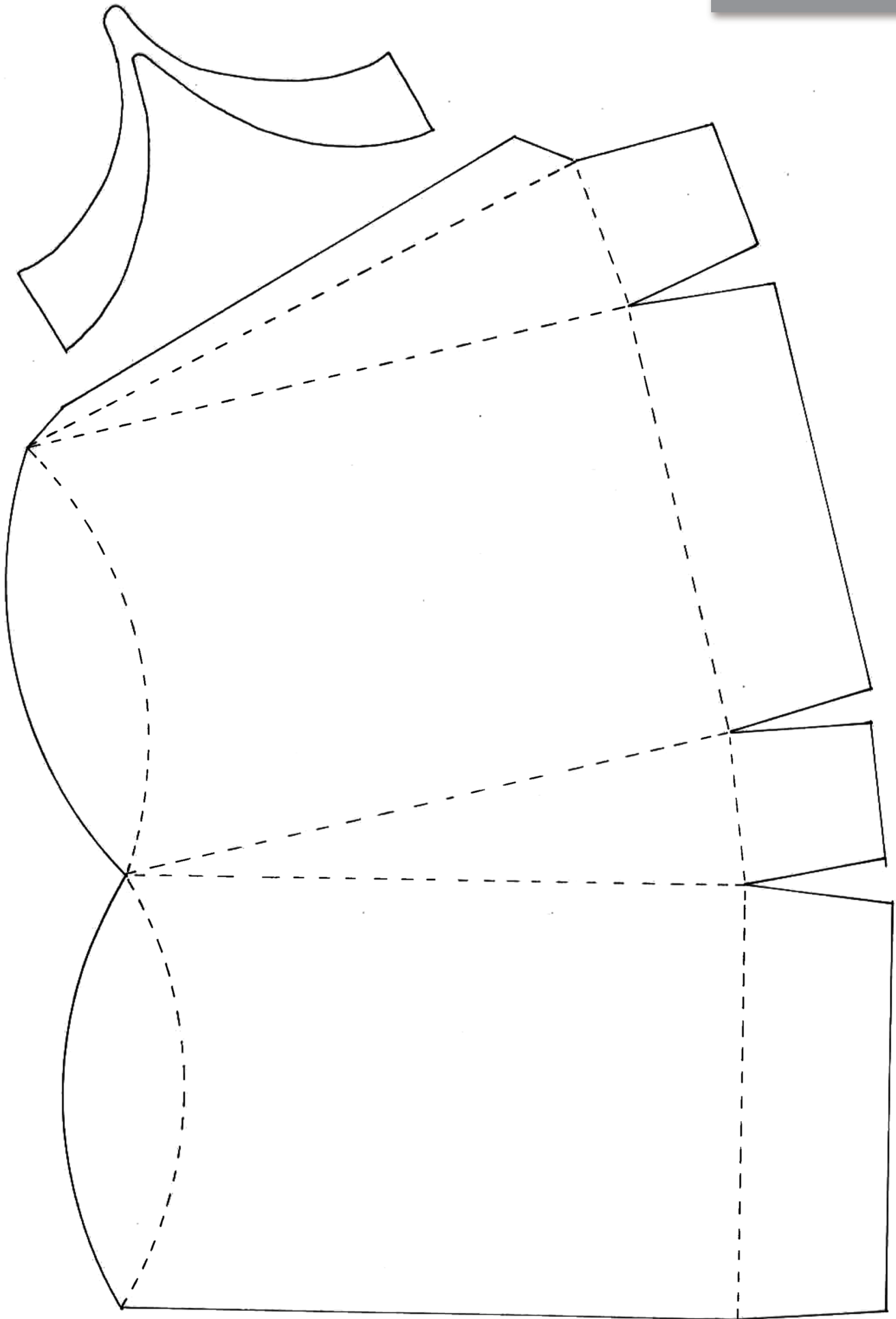
FOX BOXES

Use our templates to make a fox card and gift bag

Page 18 in magazine

One of two pages to print

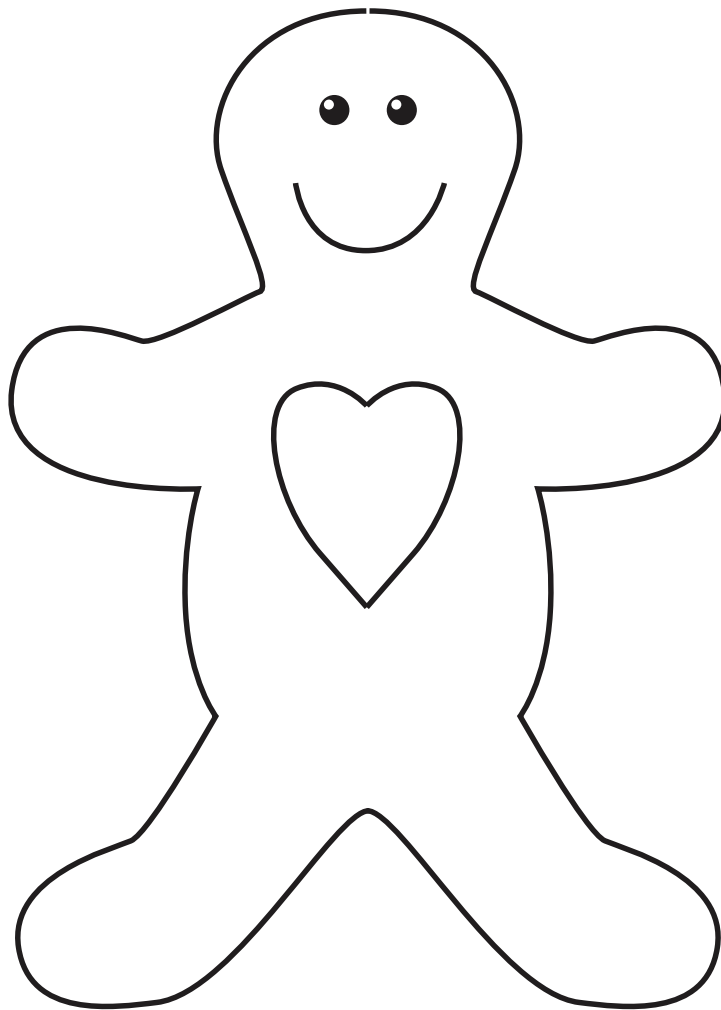




SWEETHEART BISCUITS

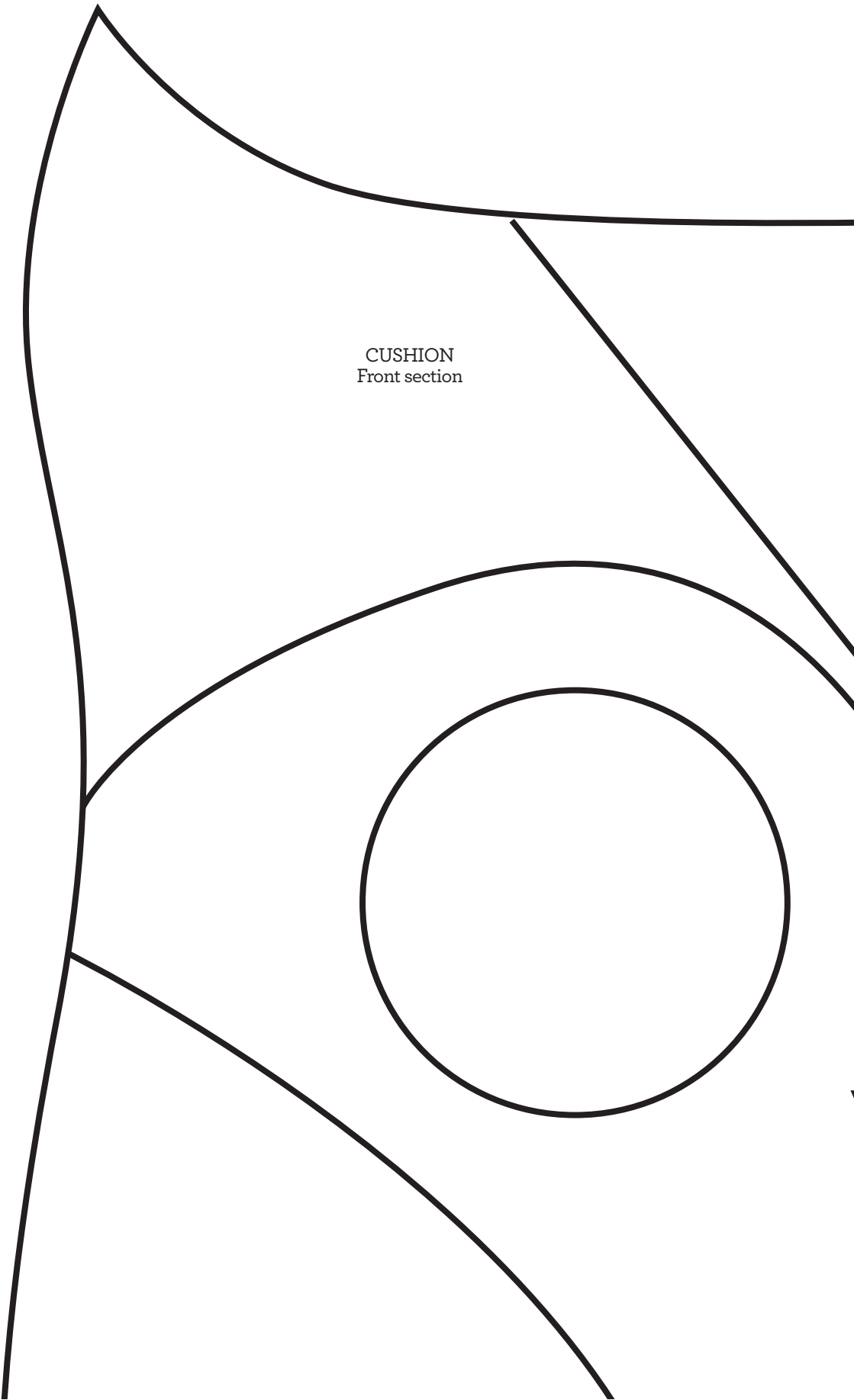
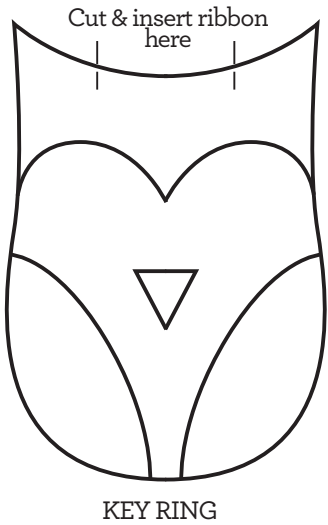
Make a gingerbread-shaped card or papercraft project

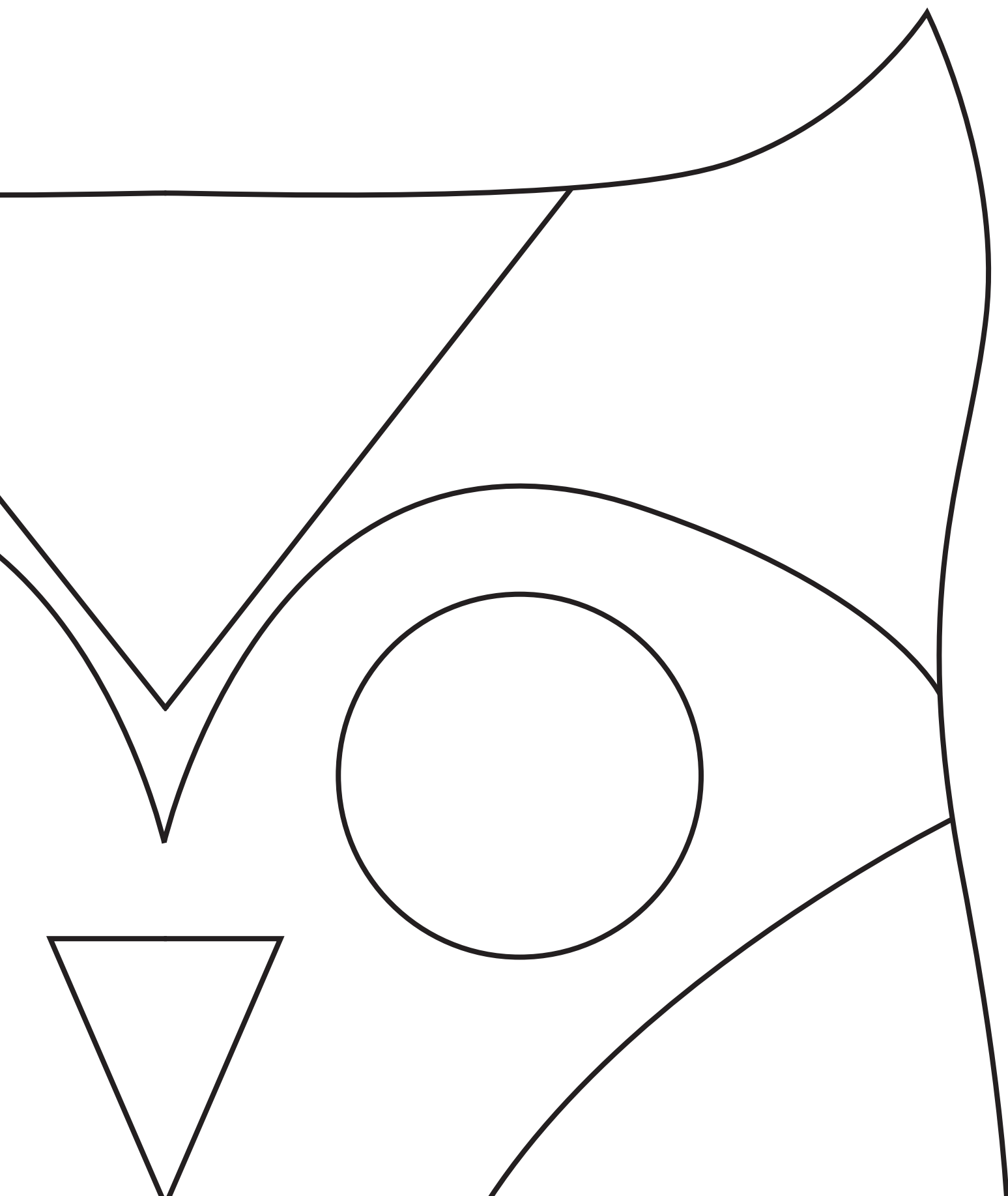
Page 77 in magazine



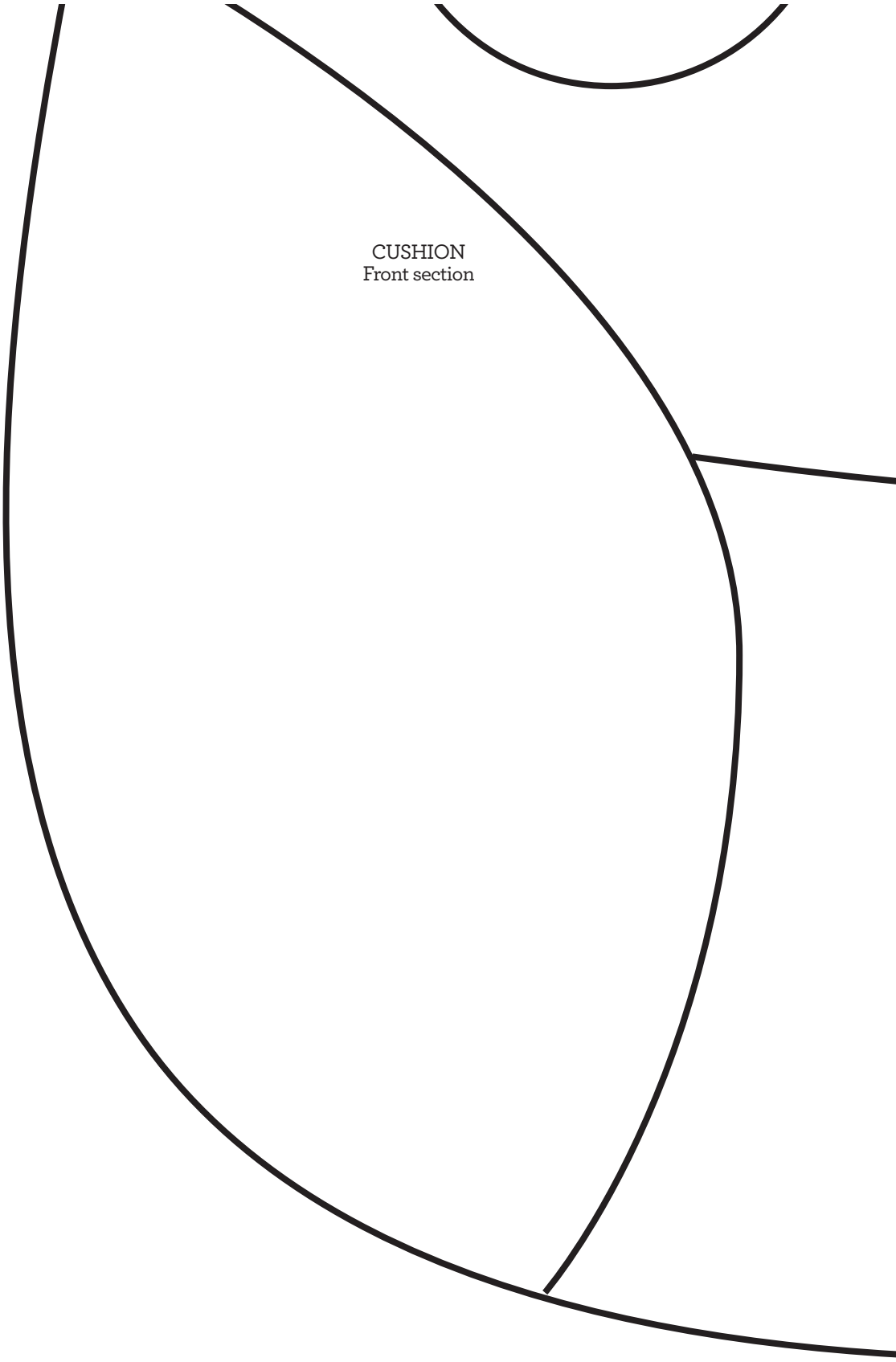
OWL PROJECTS
Stitch a family of feathered friends

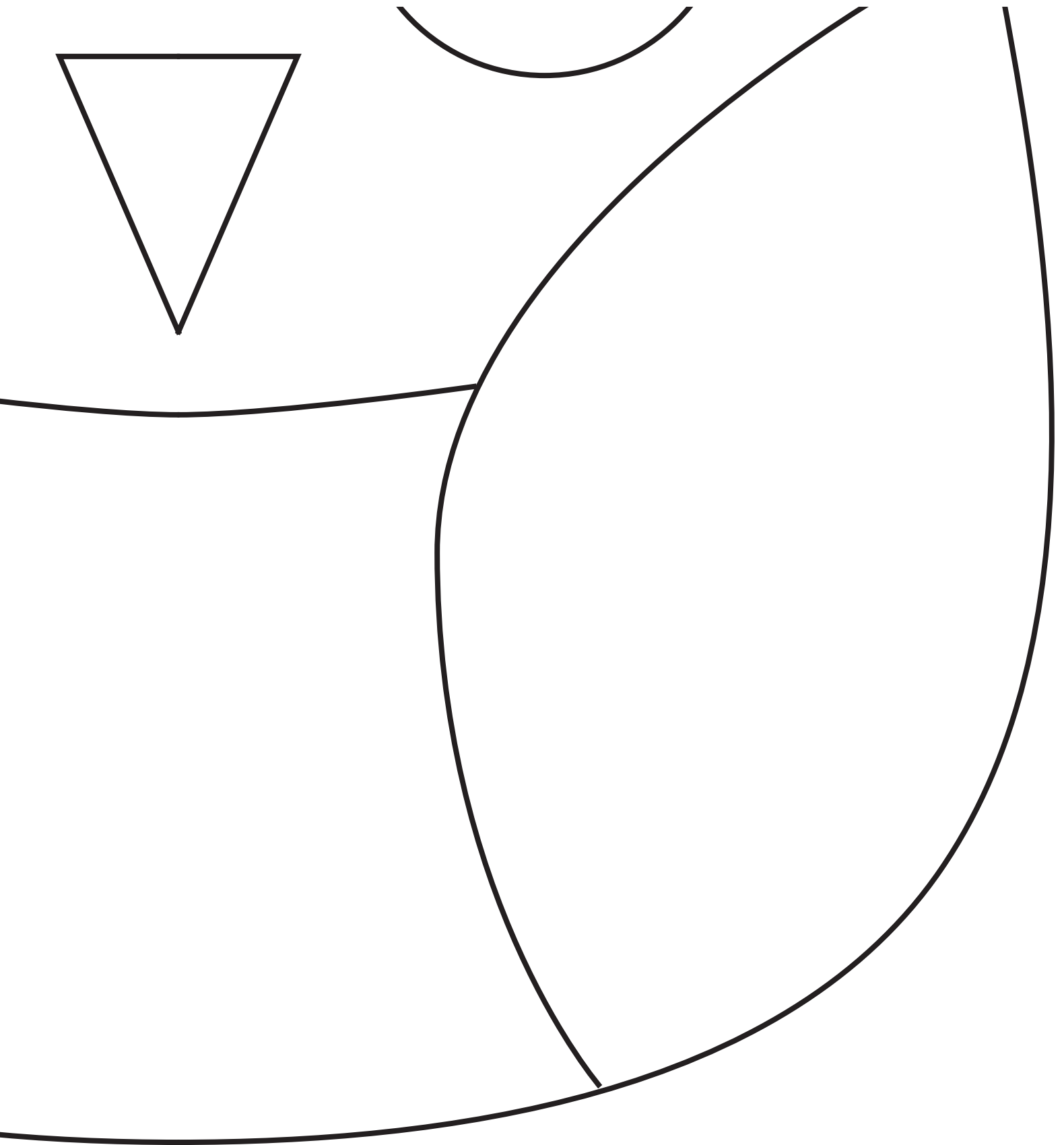
Page 90 in magazine



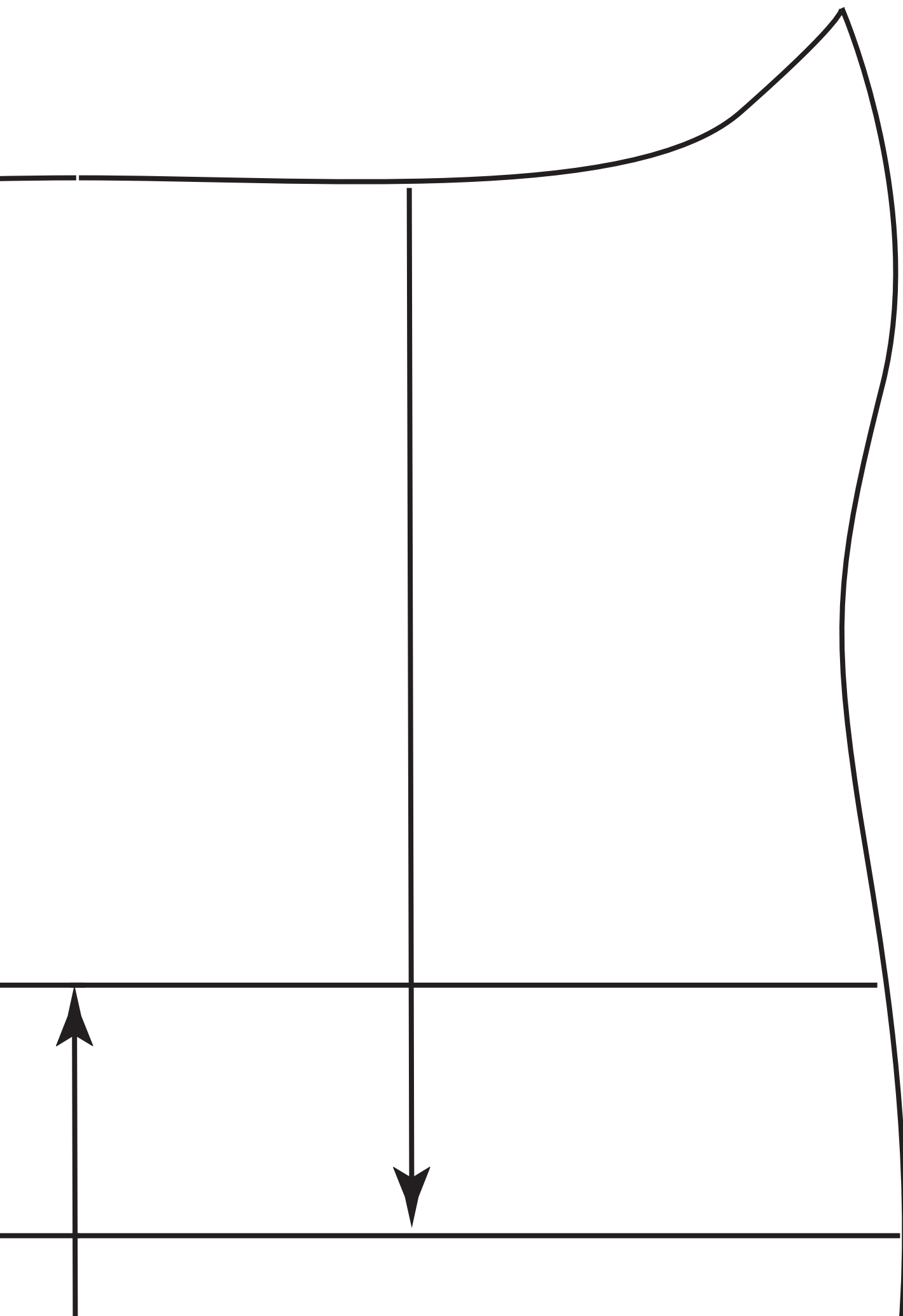


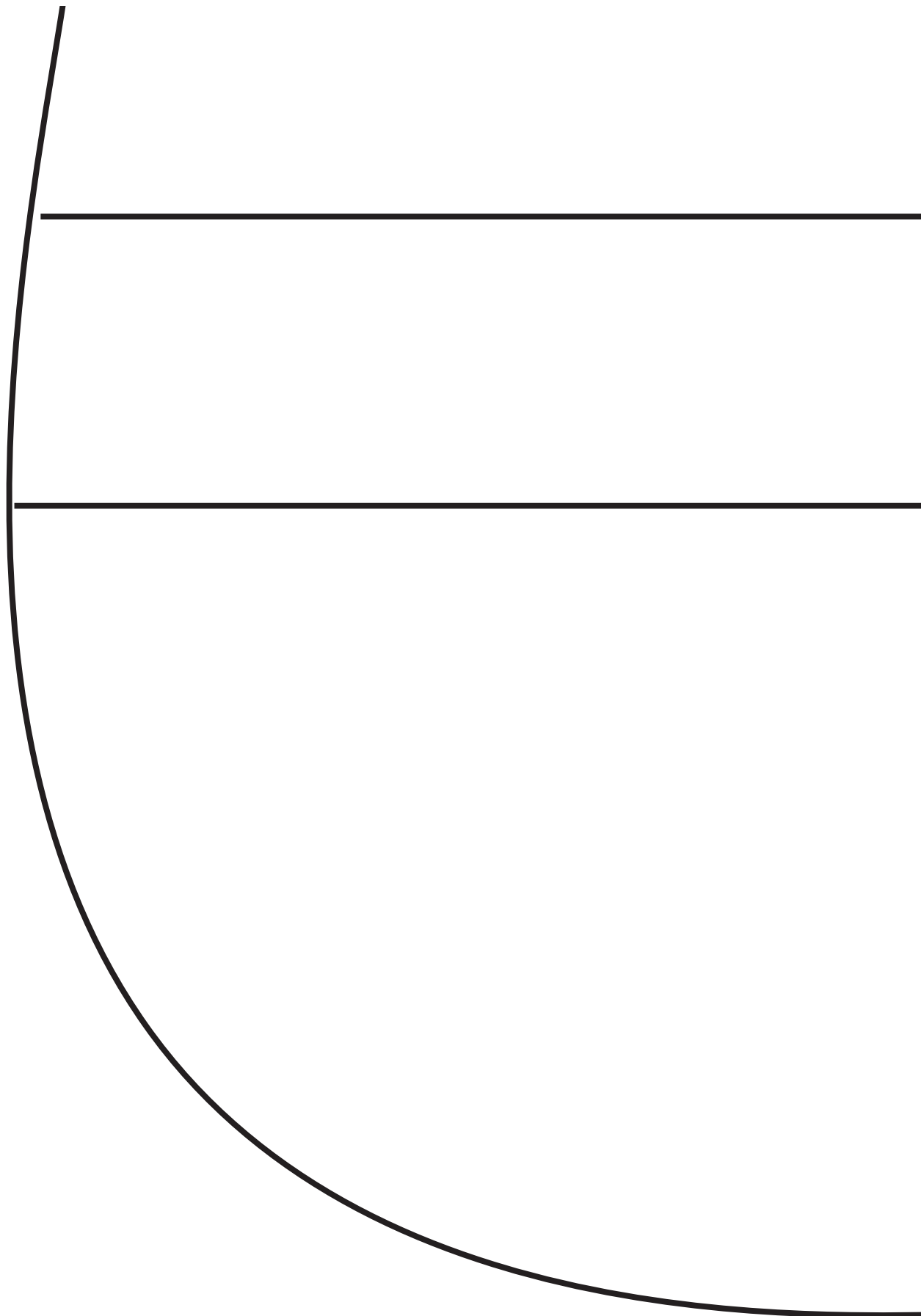
CUSHION
Front section

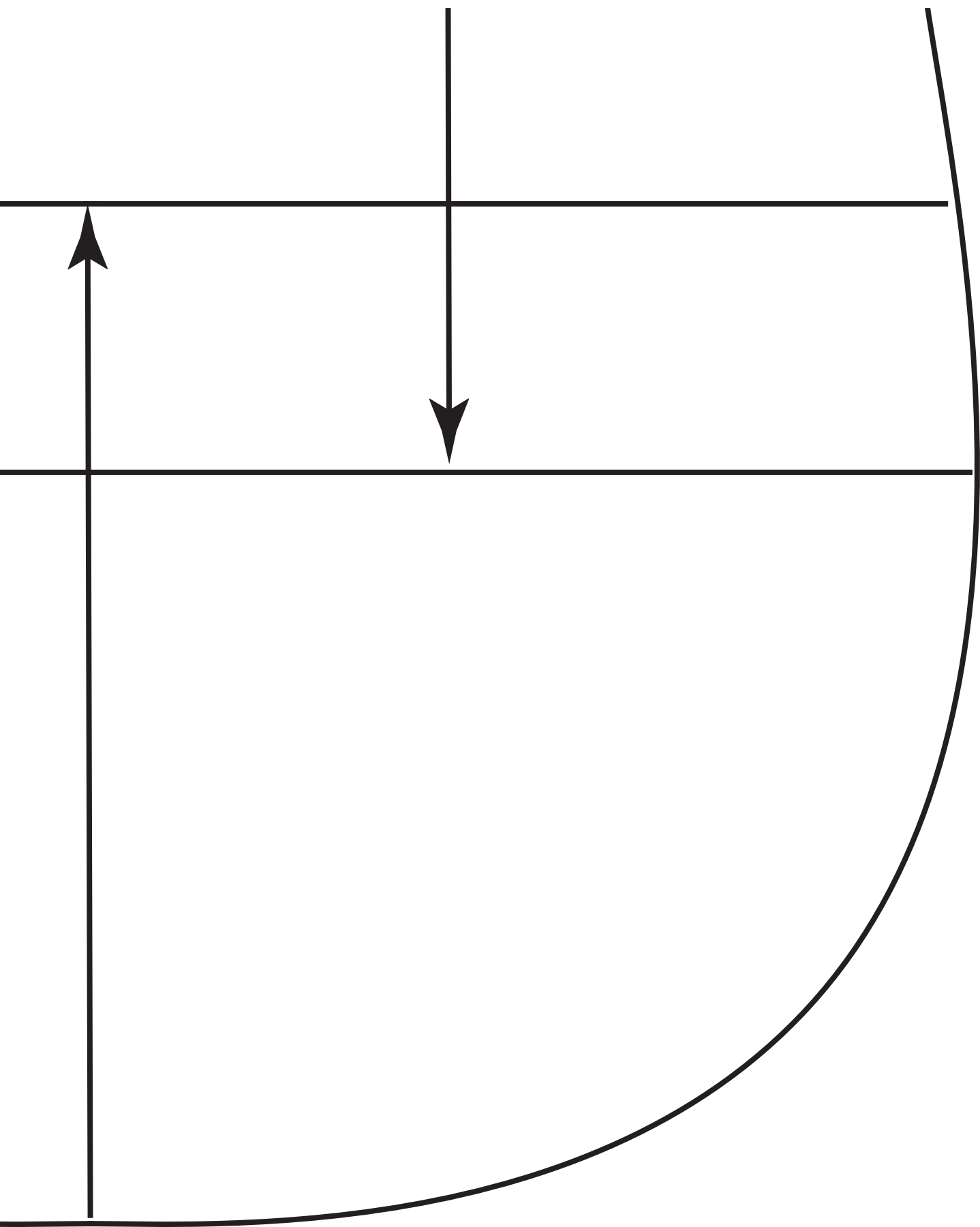
A large, empty, teardrop-shaped outline representing a cushion front section template. The shape is defined by a smooth, curved line that starts at the top left, curves around the bottom, and ends at the top right. A small, curved line at the top right indicates the attachment point for the cushion cover. The text "CUSHION Front section" is centered within the shape.



CUSHION
Back section







Page 105 in magazine

